

Cisco

010-151

**Cisco Certified Technician (CCT) for Data Center
QUESTION & ANSWERS**

Cisco

Exam 010-151

Cisco Certified Technician (CCT) for Data Center

Verson: Demo

[Total Questions: 10]

Question No : 1

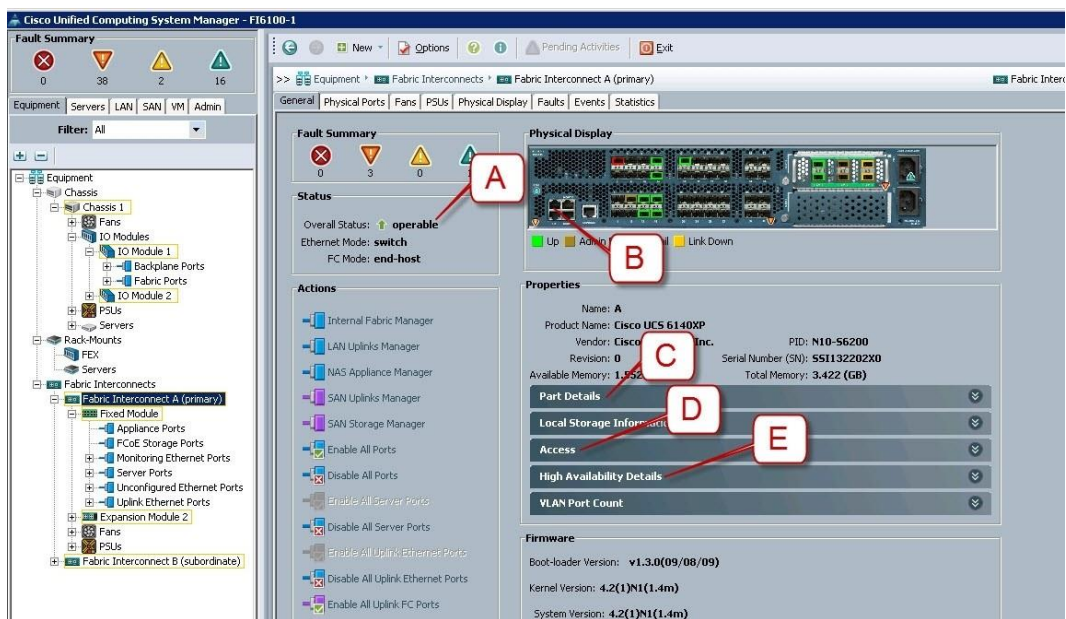
Up to what speed can Category 5e UTP cable transmit data?

- A. 10 Mb/s
- B. 100 Mb/s
- C. 1000 Mb/s
- D. 10000 Mb/s

Answer: C

Question No : 2

Refer to the exhibit.



Where is the best place to see whether the system is ready for a Fabric Interconnect failover?

- A. A - Overall Status operable
- B. B - L1 Connection
- C. C - Part Details
- D. D - Access
- E. E - High Availability Details

Answer: E

Question No : 3 DRAG DROP

Drag the password recovery procedures on a Cisco NX-OS switch from the left to the right and place them in order.	
Log in to the switch using the new administrator password.	Step 1
Reset the network administrator password.	Step 2
Load the Cisco NX-OS system software image.	Step 3
Power-cycle the switch.	Step 4
Reset the new password to ensure that is it is also the Simple Network Management Protocol (or SNMP) password.	Step 5
To enter the boot prompt mode, press the Ctrl-] key sequence from the console port session when the switch begins the Cisco NX-OS software boot sequence.	Step 6
Save the configuration.	Step 7
Display the bootflash: contents to locate the Cisco NX-OS software image.	Step 8

Answer:

Drag the password recovery procedures on a Cisco NX-OS switch from the left to the right and place them in order.	
Log in to the switch using the new administrator password.	Power-cycle the switch.
Reset the network administrator password.	To enter the boot prompt mode, press the Ctrl-] key sequence from the console port session when the switch begins the Cisco NX-OS software boot sequence.
Load the Cisco NX-OS system software image.	Reset the network administrator password.
Power-cycle the switch.	Display the bootflash: contents to locate the Cisco NX-OS software image.
Reset the new password to ensure that is it is also the Simple Network Management Protocol (or SNMP) password.	Load the Cisco NX-OS system software image.
To enter the boot prompt mode, press the Ctrl-] key sequence from the console port session when the switch begins the Cisco NX-OS software boot sequence.	Log in to the switch using the new administrator password.
Save the configuration.	Reset the new password to ensure that is it is also the Simple Network Management Protocol (or SNMP) password.
Display the bootflash: contents to locate the Cisco NX-OS software image.	Save the configuration.

Explanation:

Power-cycle the switch.

To enter the boot prompt mode, press the Ctrl-J key sequence from the console port session when the switch begins the Cisco NX-OS software boot sequence.

Reset the network administrator password.

Display the bootflash: contents to locate the Cisco NX-OS software image.

Load the Cisco NX-OS system software image.

Log in to the switch using the new administrator password.

Reset the new password to ensure that is it is also the Simple Network Management Protocol (or SNMP) password.

Save the configuration.

C:\Users\Kamran\Desktop\image.jpg

Question No : 4

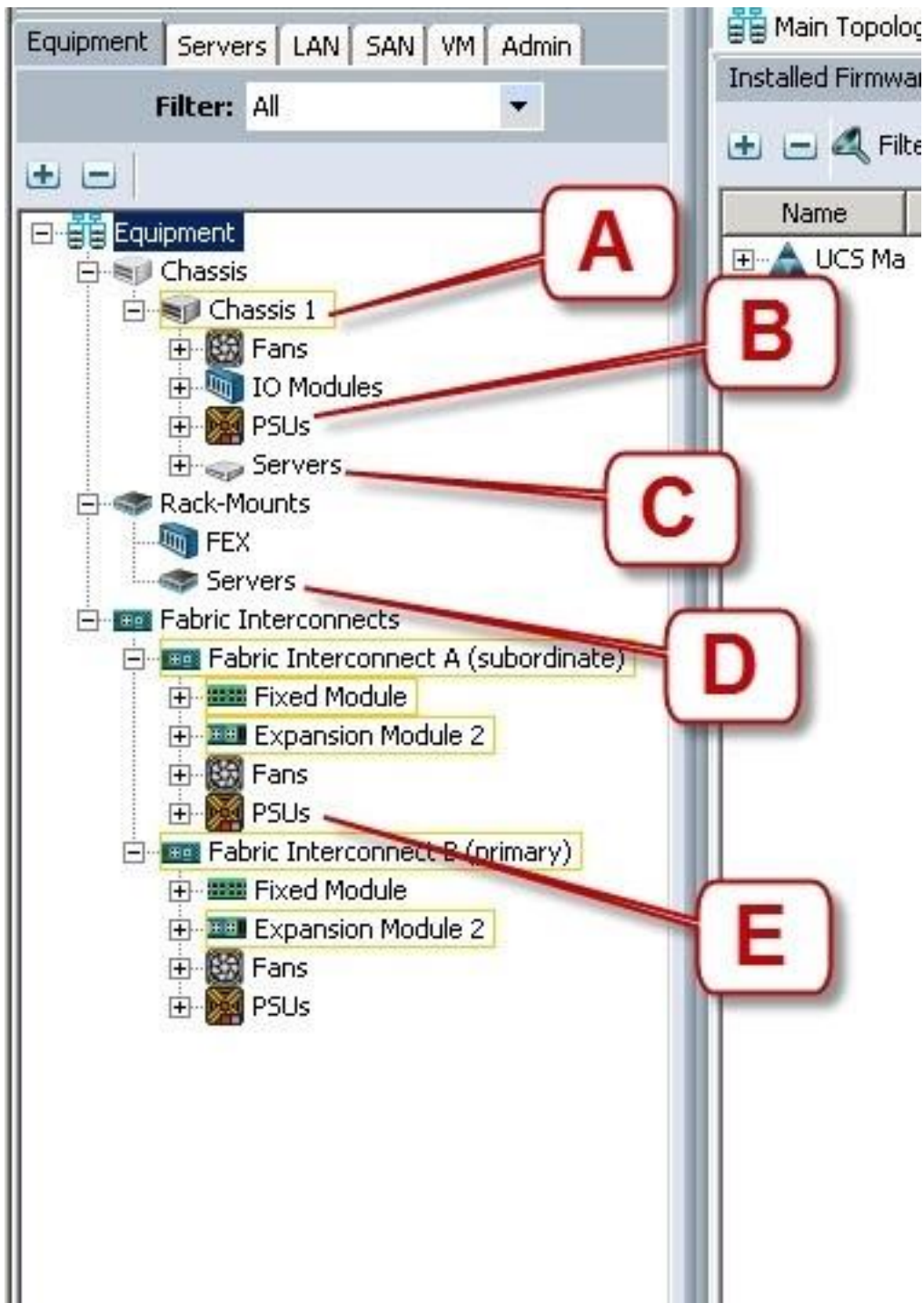
What is the maximum number of supervisor modules that the Cisco MDS 9710 Switch supports?

- A. 1
- B. 2
- C. 4
- D. 6
- E. 8

Answer: B

Question No : 5

Refer to the exhibit.



Where is the best place to see the power supply status of the blade server enclosure?

- A. A - Chassis 1
- B. B - Chassis 1 - PSUs
- C. C - Chassis1 - Servers

- D. D - Rack-Mounts - Servers
- E. E - Fabric Interconnects A - PSUs

Answer: B

Question No : 6

Which type of optics module is supported by a 6-port 40 GE Cisco Nexus 7000 M2 Series I/O module?

- A. CPAK
- B. QSFP+
- C. SFP/SFP+
- D. CFP

Answer: B

Question No : 7

What does the system status LED look like when an over temperature or major alarm occurs on the Cisco UCS 6120XP Fabric Interconnect?

- A. Amber
- B. Red
- C. Blinking amber
- D. Blinking red

Answer: C

Question No : 8

Which important feature on the front end is provided to the clients by multiple servers that access the same storage devices across the SAN?

- A. recovery
- B. redundancy
- C. resiliency

- D. security
- E. storage

Answer: B

Question No : 9

When a host firmware package policy is created, what must it be associated with to upgrade the BIOS?

- A. blade or blade pool
- B. service profile
- C. boot policy
- D. service template

Answer: B

Question No : 10

Which type of optics module is supported by a 12-port 100 GE Cisco Nexus 7700 F3 Series I/O module?

- A. CPAK
- B. QSFP+
- C. SFP/SFP+
- D. CFP

Answer: A